



Native of Jura plateau from eastern part of France, the Montbeliarde breed belongs to the European branch of Pie-Rouge breeds. Subjected to strong ranges of temperatures, Jura climate is continental, the Montbeliarde breed got adapted to its environment. For several decades, the Montbeliarde has been expanded in other mountain areas in France but also in other regions, including foreign countries with tough climates. In 2010, the Montbeliarde breed stands for 16.2% of the controlled cows in France which leads her to the place of second dairy breed.

# The **Montbeliarde** Breed

## Montbeliarde Genetics

The main provider of French genetics in the United States. Our company is based in Minneapolis, Minnesota but we ship from Spring Green, Wisconsin. We were founded in 1997. Our purpose is to bring the top French genetics to American breeders. We do sell semen and embryos but may be able to connect you to some of our clients if you are looking for livestock.

You can contact us at 3304 Dupont Avenue South, Minneapolis, Minnesota 55408, tel: 612-823-7212, email: [info@montbeliardegenetics.com](mailto:info@montbeliardegenetics.com)

[montbeliardegenetics.com](http://montbeliardegenetics.com)

# Catalog

**montbeliarde genetics**

612-823-7212

[info@montbeliardegenetics.com](mailto:info@montbeliardegenetics.com)

# AZUR JB

FR 3910570392

Born on: 2005

NENNI JB x MERCI



Montbeliarde Breed

**ISU 126**

aAa: 132564

Caseine: AB // A1A2

## MILK PROOFS

Rel: 95 – 160 daughters – 132 herds

<b>INEL</b>	<b>33</b>
<b>Protein KG</b>	<b>23</b>
<b>Fat KG</b>	<b>37</b>
<b>Protein ‰</b>	<b>1.8</b>
<b>Fat ‰</b>	<b>3.2</b>
<b>Milk</b>	<b>209</b>

## TYPE PROOFS

Rel: 94 – 114 daughters – 94 herds

<b>Total Type</b>	<b>96</b>
<b>Body Capacity</b>	<b>83</b>
Stature	95
Chest Width	83
Chest Depth	83
Body Depth	93
<b>Rump</b>	<b>95</b>
Rump length	96
Hips width	95
Thurls width	75
Rump angle	88
<b>Feet and Legs</b>	<b>98</b>
Rear legs set	110
Foot angle	87
<b>Udder</b>	<b>110</b>
Fore udder attachment	122
Rear udder height	99
Rear udder width	88
Udder depth	102
Udder balance	106
Udder cleft	112
<b>Teats</b>	<b>104</b>
Front teat placement	119
Teat orientation	106
Teat length	108
Teat shape	92
<b>Muscularity</b>	<b>89</b>

## FUNCTIONALS

<b>Synthesis Udder Health</b>	<b>-0.7</b>
Somatic Cells Count	-0.5
Clinical Mastitis	-0.9
<b>Synthesis Fertility</b>	<b>0.1</b>
Fertility Cows	-0.5
Fertility Heifers	0.7
Interval Calving – 1st AI	0.6
<b>Longevity</b>	<b>-0.6</b>
Calving Ease (aver.89)	91
Calving Ability (aver.89)	93
Milking Speed	108
Temperament	83



Detente



Detresse

June 2016 Proofs

# FUVEAU JB



Montbeliarde Breed

FR 3926472626

Born on: 2010

**ISU 129**

aAa:

Caseine: AB //

VALFIN JB x NENNI JB

## MILK PROOFS

Rel: 93 – 126 daughters – 105 herds

<b>INEL</b>	19
<b>Protein KG</b>	17
<b>Fat KG</b>	19
<b>Protein ‰</b>	-0.7
<b>Fat ‰</b>	-1.4
<b>Milk</b>	653

## TYPE PROOFS

Rel: 94 – 111 daughters – 94 herds

<b>Total Type</b>	<b>102</b>
<b>Body Capacity</b>	<b>91</b>
Stature	94
Chest Width	96
Chest Depth	82
Body Depth	98
<b>Rump</b>	<b>90</b>
Rump length	94
Hips width	81
Thurls width	65
Rump angle	80
<b>Feet and Legs</b>	<b>104</b>
Rear legs set	96
Foot angle	98
<b>Udder</b>	<b>111</b>
Fore udder attachment	122
Rear udder height	124
Rear udder width	89
Udder depth	104
Udder balance	116
Udder cleft	98
<b>Teats</b>	<b>107</b>
Front teat placement	81
Teat orientation	112
Teat length	111
Teat shape	76
<b>Muscularity</b>	<b>105</b>

## FUNCTIONALS

<b>Synthesis Udder Health</b>	1.1
Somatic Cells Count	1.6
Clinical Mastitis	0.2
<b>Synthesis Fertility</b>	0.4
Fertility Cows	1.3
Fertility Heifers	0.5
Interval Calving – 1st AI	-2.0
<b>Longevity</b>	0.8
Calving Ease (aver.89)	90
Calving Ability (aver.89)	88
Milking Speed	99
<b>Temperament</b>	101



Hilton



Iena

# ONZE JB



Montbeliarde Breed

FR 3998006455

Born on: 1998

FAUCON x BOIS LEVIN

**ISU 100**

aAa:

Caseine: AA //

## MILK PROOFS

Rel: 95 – 224 daughters – 182 herds

<b>INEL</b>	<b>6</b>
<b>Protein KG</b>	<b>3</b>
<b>Fat KG</b>	<b>16</b>
<b>Protein ‰</b>	<b>-0.6</b>
<b>Fat ‰</b>	<b>1.0</b>
<b>Milk</b>	<b>215</b>

## TYPE PROOFS

Rel: 95 – 152 daughters – 128 herds

<b>Total Type</b>	<b>100</b>
<b>Body Capacity</b>	<b>95</b>
Stature	93
Chest Width	98
Chest Depth	98
Body Depth	94
<b>Rump</b>	<b>89</b>
Rump length	92
Hips width	89
Thurls width	80
Rump angle	86
<b>Feet and Legs</b>	<b>112</b>
Rear legs set	78
Foot angle	88
<b>Udder</b>	<b>103</b>
Fore udder attachment	98
Rear udder height	134
Rear udder width	86
Udder depth	88
Udder balance	102
Udder cleft	116
<b>Teats</b>	<b>102</b>
Front teat placement	96
Teat orientation	92
Teat length	104
Teat shape	106
<b>Muscularity</b>	<b>98</b>

## FUNCTIONALS

<b>Synthesis Udder Health</b>	<b>0.2</b>
Somatic Cells Count	0.3
Clinical Mastitis	-0.1
<b>Synthesis Fertility</b>	<b>-0.4</b>
Fertility Cows	-0.3
Fertility Heifers	0.7
Interval Calving – 1st AI	-1.3
<b>Longevity</b>	<b>-0.4</b>
Calving Ease (aver.89)	93
Calving Ability (aver.89)	92
Milking Speed	102
Temperament	96



Roulette

# RIBLON JB



Montbeliarde Breed

FR 3917540378

Born on: 2000

GONCOURT x FAUCON

**ISU 124**

aAa:

Caseine: AB //

## MILK PROOFS

Rel: 95 – 1712 daughters – 884 herds

<b>INEL</b>	<b>36</b>
<b>Protein KG</b>	<b>29</b>
<b>Fat KG</b>	<b>27</b>
<b>Protein ‰</b>	<b>1.9</b>
<b>Fat ‰</b>	<b>1.3</b>
<b>Milk</b>	<b>407</b>

## TYPE PROOFS

Rel: 95 – 1081 daughters – 573 herds

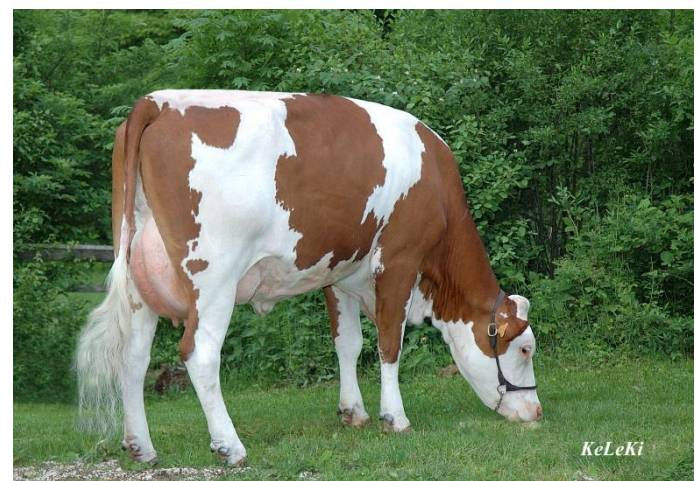
<b>Total Type</b>	<b>83</b>
<b>Body Capacity</b>	<b>85</b>
Stature	96
Chest Width	86
Chest Depth	84
Body Depth	94
<b>Rump</b>	<b>87</b>
Rump length	100
Hips width	72
Thurls width	84
Rump angle	105
<b>Feet and Legs</b>	<b>80</b>
Rear legs set	114
Foot angle	74
<b>Udder</b>	<b>97</b>
Fore udder attachment	92
Rear udder height	120
Rear udder width	96
Udder depth	87
Udder balance	66
Udder cleft	126
<b>Teats</b>	<b>104</b>
Front teat placement	108
Teat orientation	101
Teat length	111
Teat shape	96
<b>Muscularity</b>	<b>76</b>

## FUNCTIONALS

<b>Synthesis Udder Health</b>	<b>-0.8</b>
Somatic Cells Count	-0.8
Clinical Mastitis	-0.7
<b>Synthesis Fertility</b>	<b>0.3</b>
Fertility Cows	0.4
Fertility Heifers	1.0
Interval Calving – 1st AI	-1.0
<b>Longevity</b>	<b>-0.3</b>
Calving Ease (aver.89)	91
Calving Ability (aver.89)	90
Milking Speed	102
Temperament	96



Unite



Uranuse

December 2015 Proofs

# SOCRATE JB



Montbeliarde Breed

FR 7264803068  
Born on: 2001

**ISU 113**

aAa:  
Caseine: AB // A1A2

JORQUIN x EMBRUN

## MILK PROOFS

Rel: 95 – 4765 daughters – 1664 herds

<b>INEL</b>	17
<b>Protein KG</b>	13
<b>Fat KG</b>	18
<b>Protein ‰</b>	0.5
<b>Fat ‰</b>	0.9
<b>Milk</b>	277

## TYPE PROOFS

Rel: 95 – 2945 daughters – 1055 herds

<b>Total Type</b>	<b>98</b>
<b>Body Capacity</b>	<b>90</b>
Stature	90
Chest Width	99
Chest Depth	92
Body Depth	87
<b>Rump</b>	<b>95</b>
Rump length	84
Hips width	93
Thurls width	83
Rump angle	87
<b>Feet and Legs</b>	<b>108</b>
Rear legs set	90
Foot angle	95
<b>Udder</b>	<b>102</b>
Fore udder attachment	126
Rear udder height	99
Rear udder width	95
Udder depth	99
Udder balance	90
Udder cleft	106
<b>Teats</b>	<b>102</b>
Front teat placement	98
Teat orientation	96
Teat length	96
Teat shape	95
<b>Muscularity</b>	<b>106</b>

## FUNCTIONALS

<b>Synthesis Udder Health</b>	0.2
Somatic Cells Count	0.2
Clinical Mastitis	0.1
<b>Synthesis Fertility</b>	-0.4
Fertility Cows	0.1
Fertility Heifers	-0.2
Interval Calving – 1st AI	-1.1
<b>Longevity</b>	<b>0.1</b>
Calving Ease (aver.89)	88
Calving Ability (aver.89)	87
Milking Speed	94
Temperament	95



Ukraine



Usee

# VALSEUR JB



Montbeliarde Breed

FR 3929640557

Born on: 2004

MERCI x IMPOSTEUR

**ISU 111**

aAa:

Caseine: //

## MILK PROOFS

Rel: 94 – 87 daughters – 83 herds

<b>INEL</b>	-1
<b>Protein KG</b>	-5
<b>Fat KG</b>	22
<b>Protein ‰</b>	-1.7
<b>Fat ‰</b>	1.6
<b>Milk</b>	267

## TYPE PROOFS

Rel: 92 – 80 daughters – 75 herds

<b>Total Type</b>	<b>103</b>
<b>Body Capacity</b>	<b>92</b>
Stature	93
Chest Width	98
Chest Depth	94
Body Depth	89
<b>Rump</b>	<b>95</b>
Rump length	98
Hips width	96
Thurls width	94
Rump angle	96
<b>Feet and Legs</b>	<b>87</b>
Rear legs set	104
Foot angle	86
<b>Udder</b>	<b>117</b>
Fore udder attachment	114
Rear udder height	126
Rear udder width	102
Udder depth	118
Udder balance	132
Udder cleft	123
<b>Teats</b>	<b>101</b>
Front teat placement	86
Teat orientation	88
Teat length	98
Teat shape	90
<b>Muscularity</b>	<b>102</b>

## FUNCTIONALS

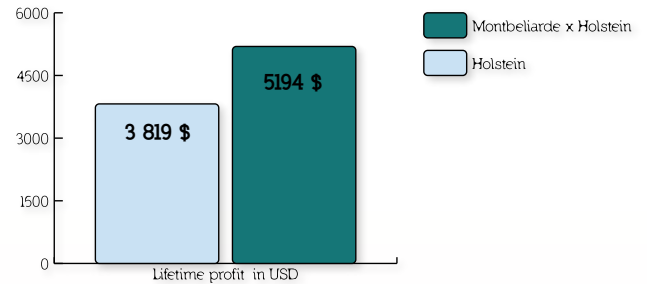
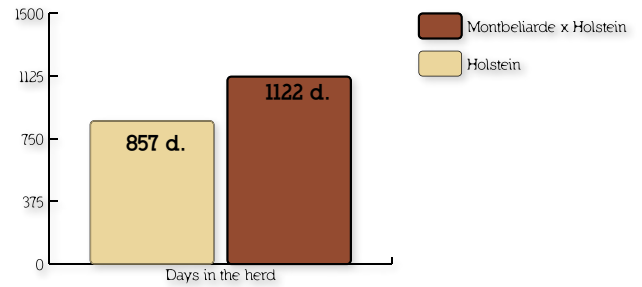
<b>Synthesis Udder Health</b>	1.2
Somatic Cells Count	1.2
Clinical Mastitis	0.9
<b>Synthesis Fertility</b>	0.6
Fertility Cows	0.5
Fertility Heifers	1.3
Interval Calving – 1st AI	-0.7
<b>Longevity</b>	1.1
Calving Ease (aver.89)	91
Calving Ability (aver.89)	91
<b>Milking Speed</b>	104
<b>Temperament</b>	92

*No picture available*

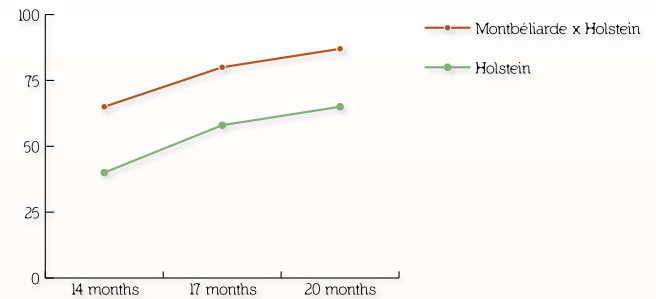
# Crossbreeding figures

		Holstein	Montbeliarde x Holstein
1st service conception rate	1st lactation	25%	27%
	5th lactation	17%	43%
Pregnancy rate	1st lactation	16%	19%
	5th lactation	12%	26%
Somatic cells count	1st lactation	83,000	68,000
	5th lactation	203,000	133,000
Calving difficulty at 1st calving		17.7 %	7.2 %
Stillbirth at 1st calving		14.0 %	6.2 %

Source: Overview of California study



Lifetime profit within 4 years of first calving (ignoring health costs)



% of cows starting a 2nd lactation within fixed intervals

## Fertility



### Jura Bétail undertakes it!

Semen – especially from the best sires – is only as good as its fertilizing ability. Jura Bétail is taking steps to ensure the semen quality of our best sires so each cow has the opportunity to calve regularly.

#### PLEDGE #1:

Jura-Bétail will not market semen from sires that fail fertility tests during their first use period; Breeders can trust the quality of the new sires.

#### PLEDGE #2:

Jura-Bétail guarantees **8 million live sperm count** per **straw** after thawing. This minimum threshold of concentration at the time of AI guarantees its good fertility.

#### PLEDGE #3:

Jura-Bétail will publish the fertility results of the main sires used every year. Breeders get the specifics on the fertility of our sires.

**montbeliarde genetics**

612-823-7212  
info@montbeliardegenetics.com

### BETTER CONCEPTION IN THE JURA DISTRICT!

The fertility of French herds have been analyzed in 2008 by the French Livestock Institute. This study clearly shows that **Jura is the #1 district for fertility**. And the positive effect of our main breed doesn't explain everything. Indeed, within the Montbeliarde breed, out of 100 AI, Jura Montbeliarde breeders get **4 to 7 more calves** than those in other districts. These results vindicate Jura-Bétail's Fertility pledges.